

Legal

Technical

Engineering

Scientific

Professional



www.rgbsi.com

Administrative

Information Technology

Finance

Industrial

TOTAL WORKFORCE SOLUTION



Minority Certified Company



ISO 9001:2008 Certified



AS9100:2004



USA

CANADA

INDIA

CHINA

GERMANY

www.rgbsi.com

About Us

RGBSI is a global provider of Vendor Management Solutions, Staffing Augmentation, Recruitment Process Outsourcing (RPO), Payroll Services, Information Technology Services and Engineering Design Services since 1997.

Headquartered in suburb of Detroit, Michigan, RGBSI has several offices in the US, Canada, Germany, China and India. Strategically located in five countries, RGBSI is able to quickly service local and international client's needs. RGBSI has achieved consistent growth each year and is listed as one of the fastest-growing private companies in America by Inc. magazine in 2009.

RGBSI is a certified Minority Business Enterprise, ISO 9001:2008 and AS 9100:2004 Rev B Quality Systems organization.

Staff Augmentation

RGBSI offers premier solutions in Staff Augmentation and Workforce Management to our clients around the globe. RGBSI connects to the most talented professional with the best jobs in the marketplace. RGBSI places contract, contract-to-hire, direct hire, payroll talent within the areas of Engineering, IT, Professional, Finance, Scientific, Administrative and Light/Heavy Industrial.

RGBSI is acknowledged by the industry for providing the highest caliber of candidates in the market. Strong recruiting has been RGBSI key to success due to our degreed recruiters having skill-based industry experience in their area of specialty. RGBSI maintains this sophisticated team by providing them with extensive training to stay ahead of the current technology trends.

Our unique 24/7 recruiting structure allows our lead degreed recruiter to focus on technical skill analysis for each candidate. Due to this structure we can quickly provide top talent on a larger scale.



RGBSI understands the importance of a flexible workforce to meet our clients expanding and/or challenging needs therefore we offer short-term, long-term, payroll or project-based options for all hiring requirements. We maintain these options while offering competitive salaries and attractive benefits to employees to ensure we retain the industries top talent.



Contract & Contract to Hire: The ability to bring a candidate in as a contract employee, evaluate their skills and compatibility with the option to hire permanently at any time. RGBSI is able to fill short-term contract positions while allowing the client to hire an employee at any point during their assignment.

Permanent Hire: RGBSI takes time in understanding a client's organization and culture. This knowledge allows us to identify individuals who are matched flawlessly into the environment. RGBSI provides clients with a flat-fee based service to identify, screen, qualify, interview and perform background verifications. The fee is based on the salary amount of the candidate hired.

Payroll Services: Clients who have access to candidate talent may not want to take on the burden of adding that individual to their payroll. RGBSI offers clients a payroll service option whereby RGBSI will handle all payroll responsibility including bi-weekly or weekly payroll, workers compensation, unemployment insurance and benefits administration.

Statement of Work / Project Based Work: RGBSI provides clients the option to outsource projects where RGBSI identifies and secures resources to complete short/long-term, on-site or offsite work.

Recruitment Lifecycle Management:

RGBSI is a leader in recruitment Lifecycle Management by providing a centralized and cohesive solution to manage our client's global workforce. RGBSI handles the management of the entire on-boarding to off-boarding process for our clients labor requirements.



Talent Management

RGBSI is continually building a vast network of trained professionals through various traditional and innovative Sources such as networking events, Job Fairs, Summits and Advisory Boards. With access to virtually every Job Board available such as Monster, Career Builder, Dice, Yahoo Jobs, LinkedIn etc. we are able to retrieve the markets newest talent.

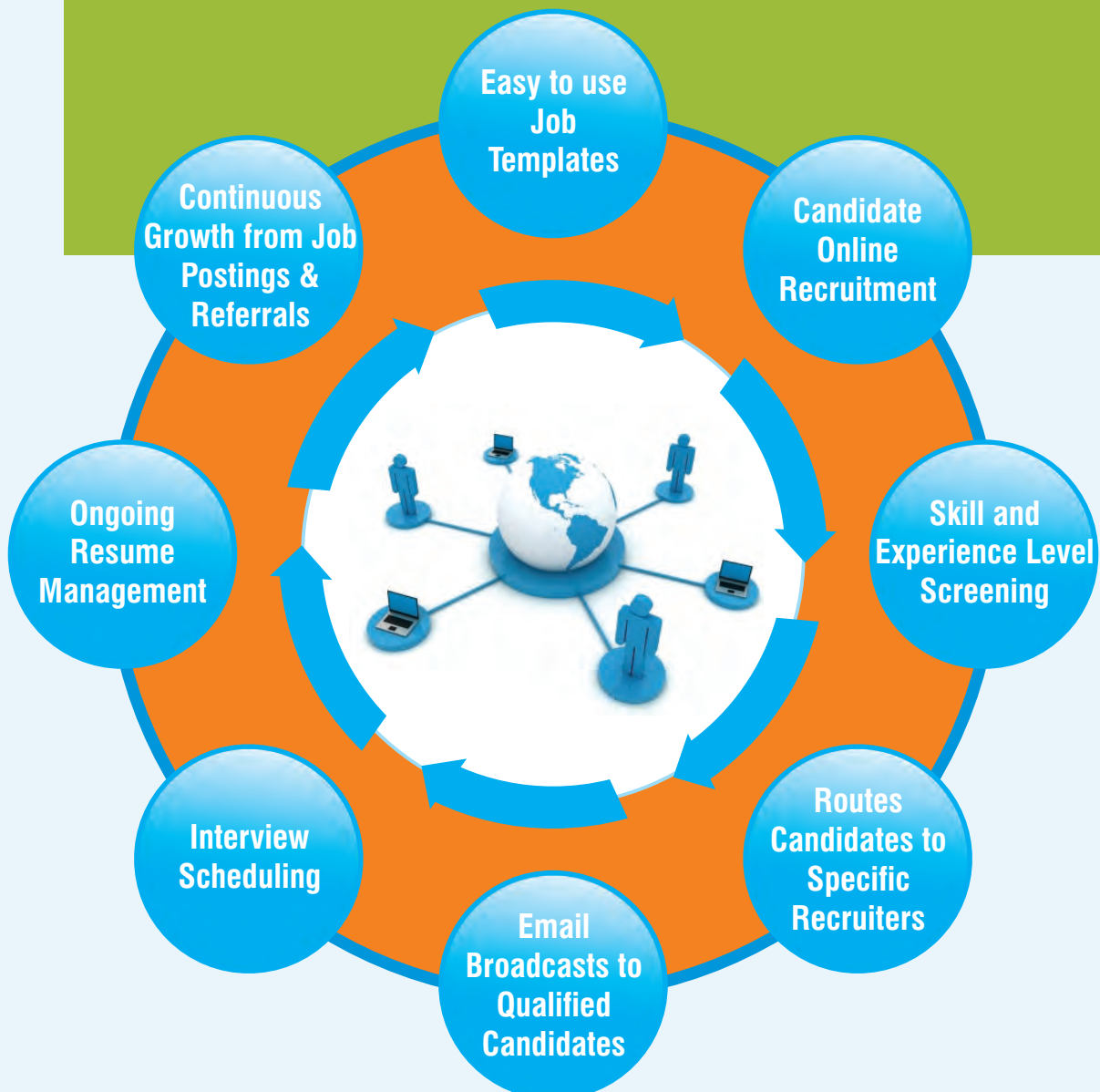
RGBSI Network	Our largest sourcing pool
Referral Programs	RGBSI has a strong program called I-REFER
Trade Fairs	Attend local and industry trade fairs
Sub-Supplier Resources	We have existing Engineering partners in key areas
Innovative Media	Radio, TV, Social Networking etc.
Job Postings	RGBSI website, Newspapers, etc
Job Boards	Monster, Dice, CareeBuilder, State & Local Talent Banks

Resource Management

RGBSI has developed an in-house innovative Applicant Tracking System to manage our entire recruitment lifecycle. This web-based, interactive database allows us to manage over 500,000 qualified candidates. Our database allows us to post requirements, generate reports and customize candidate interactions on open and active position.

Benefits

- ▶ Less time spent creating job descriptions
- ▶ Process driven and rule based to ensure efficiency
- ▶ Allows for monitoring of individual recruiter goals
- ▶ Stores resumes by classification for easy retrieval
- ▶ Faster access to top talent
- ▶ Applicant routing creates efficiencies
- ▶ Allows for easy candidate comparison
- ▶ Easy online applications
- ▶ Less time spent creating job descriptions



RGBSI GLOBAL LOCATIONS

- Branch Locations
- Future Expansion



Rapid Global Business Solutions, Inc(RGBSI)

World Headquarters
31791 Sherman Ave.
Madison Heights, MI 48071
T: (248)589 - 1135
F: (248)589 - 1329
E: moreinfo@rgbsi.com

www.rgbsi.com



US Locations:

Michigan
New York
Tennessee
Georgia
Texas

India Locations:

Bangalore - Global Tech Center
Hyderabad
Delhi
Chennai